

Small VBR[®]

vertebral body replacement

100Years

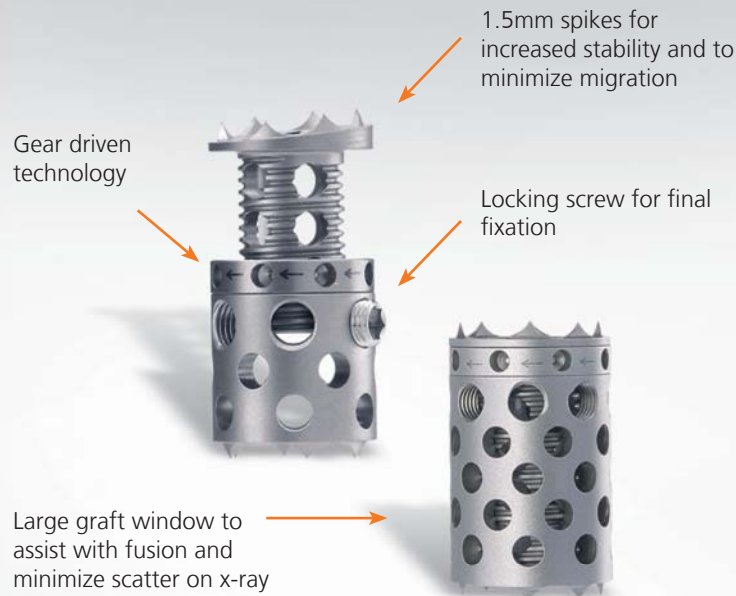
Over A Century Of Innovation



Ulrich
medical USA

System

The Small VBR is used for the surgical reconstruction of defects of the thoracic and lumbar spine (T1 to L5). With only a few basic instruments, a wide range of implants can be used to match patient anatomy and restore height and sagittal balance for spinal correction.



| Diameter | Expansion Range |
|----------|-----------------|
| 12mm | 10 - 65mm |
| 14mm | 10 - 65mm |
| 16mm | 10 - 65mm |

Angle Options

0°, 6°

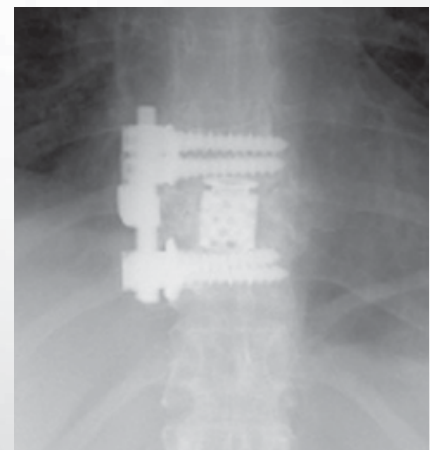


Indications

The Small VBR is a vertebral body replacement device intended for use in the thoracic and lumbar spine (T1-L5) to replace a collapsed, damaged, or unstable vertebral body due to tumor or trauma (i.e., fracture).

The Small VBR is intended to be used with supplemental internal spinal fixation systems that are cleared by the FDA for use in the thoracic and lumbar spine. Such systems include posterior pedicle screw and rod systems, anterior plate systems, and anterior screw and rod systems.

The use of bone grafting material with the Small VBR is optional.



T8-T10 anterior stabilization with Small VBR

Department of Neurosurgery,
Washington University,
St. Louis, Missouri

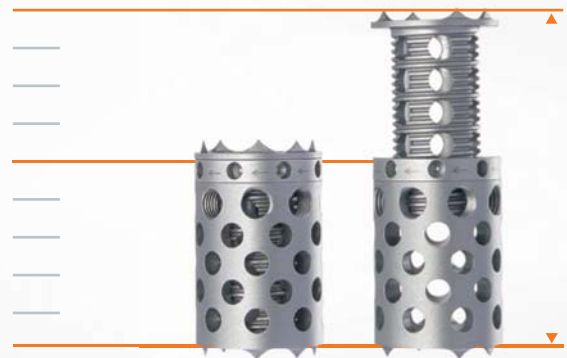
Advantages

The Small VBR may be continuously expanded in situ, allowing for easy placement and bridging of the defect. The implant is anchored safely between the adjacent vertebral bodies.

The implants are designed with large contact areas and fixed end caps with spikes to safely engage the vertebral end plates to minimize migration and subsidence.

All implants may be filled with bone graft before and after insertion. Additional application of bone graft outside the implant may enhance the fusion mass.

- Easy, gear driven expansion
- Adjustable to match anatomy
- Simple, limited instrumentation
- Three diameters, two angles
- Fillable with bone graft or substitute
- Disposable, single-use cassette heads
- Titanium alloy



Components

| Implants | Expansion Range | Angulation | Product Number |
|-------------------|-----------------|------------|----------------|
| Small VBR, Ø 12mm | 10–13mm | 0° | CS 2250-12-10 |
| | 12–17mm | 0° | CS 2250-12-12 |
| | 16–25mm | 0° | CS 2250-12-16 |
| | 16–25mm | 6° | CS 2250-12-166 |
| | 24–40mm | 0° | CS 2250-12-24 |
| | 24–40mm | 6° | CS 2250-12-246 |
| | 39–65mm | 0° | CS 2250-12-39 |
| | 39–65mm | 6° | CS 2250-12-396 |
| Small VBR, Ø 14mm | 10–13mm | 0° | CS 2250-14-10 |
| | 12–17mm | 0° | CS 2250-14-12 |
| | 16–25mm | 0° | CS 2250-14-16 |
| | 16–25mm | 6° | CS 2250-14-166 |
| | 24–40mm | 0° | CS 2250-14-24 |
| | 24–40mm | 6° | CS 2250-14-246 |
| | 39–65mm | 0° | CS 2250-14-39 |
| | 39–65mm | 6° | CS 2250-14-396 |
| Small VBR, Ø 16mm | 10–13mm | 0° | CS 2250-16-10 |
| | 12–17mm | 0° | CS 2250-16-12 |
| | 16–25mm | 0° | CS 2250-16-16 |
| | 16–25mm | 6° | CS 2250-16-166 |
| | 24–40mm | 0° | CS 2250-16-24 |
| | 24–40mm | 6° | CS 2250-16-246 |
| Locking screw | 39–65mm | 0° | CS 2259 |

| Instruments | Product Number |
|------------------------------------|----------------|
| Manual expansion instrument | CS 2252 |
| Inserter for small heights | CS 2255-1 |
| Inserter for large heights | CS 2255-2 |
| Handle | CS 2256-01 |
| Assist handle | CS 2256-02 |
| Outer shaft | CS 2256-20 |
| Inner shaft | CS 2256-21 |
| Implant releasing rod | CS 2256-22 |
| Screwdriver with holder, hex 2.5mm | CS 2261 |
| Lollipop trial, Ø 12-14mm | CS 2265-1 |
| Lollipop trial, Ø 16-20mm | CS 2265-2 |
| Measuring template for Small VBR | CS 2266-3 |
| Impactor, straight, height 8mm | CS 2274-2 |
| Measuring caliper | CS 5788 |
| 12mm disposable cassette head | CS 2256-12 |
| 14mm disposable cassette head | CS 2256-14 |
| 16mm disposable cassette head | CS 2256-16 |



Over A Century Of Innovation



18221 Edison Avenue, Chesterfield, MO 63005
 Phone: 866.519.0268 | Fax: 636.519.0271
 www.ulrichmedicalusa.com
 IFU: www.ifu.ulrichmedical.com



World Headquarters
 ulrich medical®
 Buchbrunnenweg 12
 89081 Ulm, Germany

US0205 R8 / 2018-06

